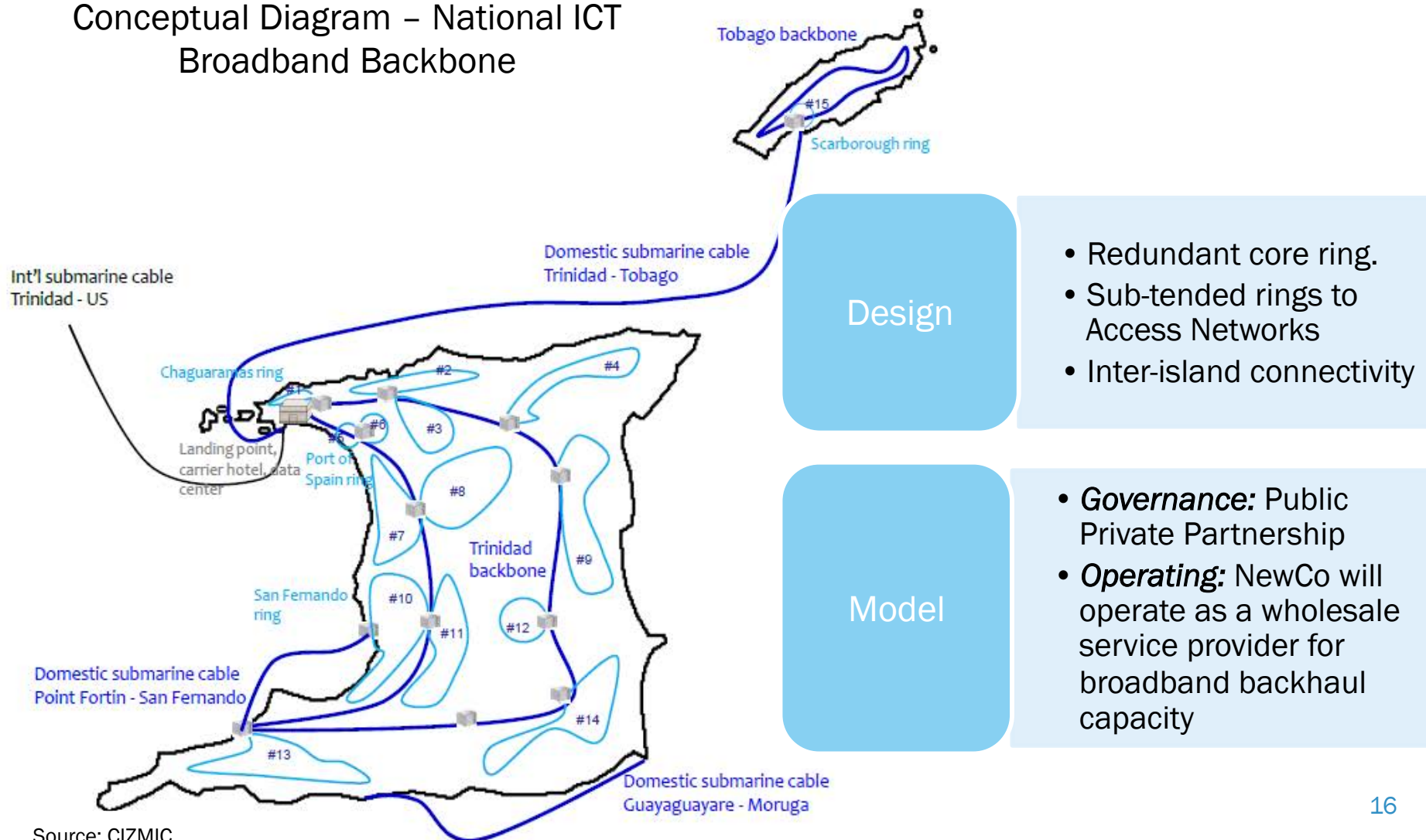


# Conceptual Network Topography

## Conceptual Diagram – National ICT Broadband Backbone



# Establishment of the National ICT Broadband Backbone

- ∞ The WB has been engaged to assist in the development of the Governance, Economic, Financial and Operating Models for the establishment of the Broadband Backbone.:
  - PPP arrangement anticipated.
  - Inclusion of existing Operators in the PPP expected.
- ∞ The WB will also assist in the preparation of the tender documents.
  - It is envisaged that a NewCo will provide wholesale services to existing carriers.



# Development of a New Broadband Strategy

- ✉ In 2012, TATT commenced the process to make 700 MHz spectrum available for enhanced mobile broadband services, aligned with the Supply Side initiatives proposed in the Broadband Strategy.
  - Tender was issued in late 2013.
  - Evaluation of bids completed in August 2014.
  - Award of 700 MHz spectrum imminent
  - Prospect of a potential 3<sup>rd</sup> operator.

# *Parallel Initiatives*

# Related Initiatives

- ∞ Government's wide area network (GovNeTT) as anchor tenant of National ICT broadband backbone:
  - smarTT initiative to further expand existing Government wide area network.
- ∞ Establishment of a second submarine cable system landing point and Carrier Hotel:
  - Second Supply Side initiative included in the engagement of the WBG.
  - Would be used by inter-island cable system as well.
- ∞ Establishment of an Internet Exchange Point (IXP):
  - Became operational in April, 2014.

# 2<sup>nd</sup> Digital Divide Survey

In 2013, a second survey was conducted, which yielded the following improved results:

- DAI – 0.9217,
- DOI – 0.7194 and
- ICT Development Index (IDI) – 5.5582.

***Thank You***

